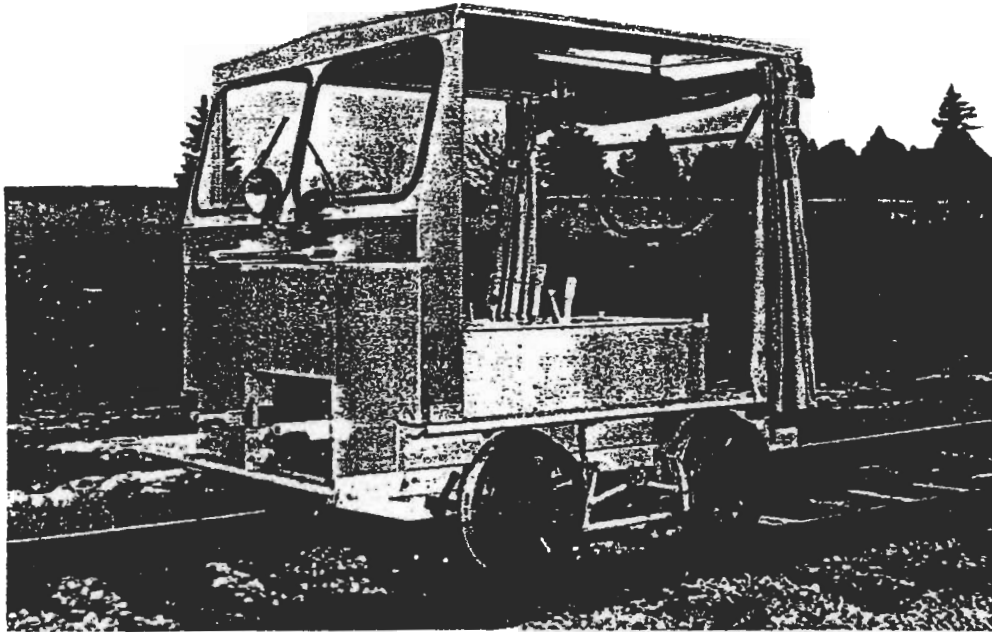


## SERVICE INSTRUCTIONS AND PARTS LIST

# *Fairmont*

### MT14 SERIES L LIGHT SECTION CARS



This bulletin contains instructions for the operation and care of standard MT14 Series L inspection cars and lists parts for them. See engine manufacturers' bulletin for engine operating instructions and repair parts.

## FAIRMONT RAILWAY MOTORS

A Division of HARSCO CORPORATION

FAIRMONT, MINNESOTA, U. S. A.

DISTRICT OFFICES

Chicago Philadelphia St. Louis St. Paul

IN CANADA: Fairmont Railway Motors, Ltd., Toronto, Ont.

Printed In U. S. A.

**GENERAL INFORMATION**

This bulletin contains operating instructions and lists repair parts for MT14-L motor cars. See engine bulletin for engine bulletin for engine parts and operating instructions.

**PREPARING CAR FOR SERVICE**

Inspect everything for possible damage in transit. If in bad condition make a full report to supervising officials at once. Be sure switch button on car seat is down, and connect the loosened wire on the battery. Examine all bolts, nuts and electrical connection for tightness. See that all cotter pins are spread open.

Fill grease gun with a grease which will not congeal at 40 degrees below zero and will not flow at temperatures of 275 degrees F. All major oil companies can furnish such lubricant. Lubricate the four main axle bearings, drive axle center bearing, brake shaft bearings, differential axle and idler sprocket.

Remove gas tank filler cap at rear of car and fill tank with gasoline, then replace filler cap. When filling tank, strain fuel through a fine mesh screen funnel or clean cloth free from lint. Open shut-off under gas tank. Open drain cock under carburetor, see that gasoline flows, then close it tightly.

Starter switch button is located at the right rear corner of control panel. Just ahead of starter switch is a push pull ignition switch. The switch is in the "on" position when switch button is pulled up from control panel and in the "off" position when pushed down. At the right front corner of control panel is the choke control. Brake lever is the long lever through center and throttle control is on the left. Ammeter and oil pressure gauges are to the right of brake lever.

Extending through the seat top, just ahead of the control panel are two shift levers. These levers control the shifting of the transmission. The front lever controls the "Forward" and "Reverse" shifting. Located in tool tray directly in front of operator is the clutch pedal.

Set car on the track and operate the controls to become familiar with them. Release brake, shift transmission to neutral and see that car rolls freely. Be sure wheels and axles run true, and brake shoes do not drag.

**HANDLING THE CAR**

Pull out extension lift handles when setting car on and off the track. Be careful not to strike axle sprocket on rails. Use care in setting off at crossings, switches, and frogs so axles are not sprung by pinching wheels in flange ways. Avoid heavy jars and rough handling at all times.

**STARTING THE CAR**

See engine bulletin for detailed instructions covering starting, operating and stopping.

Always drive with engine ahead in normal service. After starting and warming up the engine, seat passengers, operator facing ahead. Depress clutch pedal and shift "Forward" and "Reverse" lever to Forward. Also with clutch pedal depressed shift "High" and "Low" lever to low, then release the brake. Gradually open throttle.

**DRIVING THE CAR**

After car gets underway, use throttle to regulate speed. Accelerate to a speed of 12 to 18 miles per hour, close throttle, depress clutch and shift "High" - "Low" shift lever to "High", release clutch and open throttle. Carefully shift back to "Low" for heavy grades and slow speeds.

Always run in "High" wherever possible. Do not operate the car at speeds above 20 miles per hour when in Low gear, as excessive engine speeds should be avoided. Drive a new car slowly and carefully until thoroughly familiar with the controls. A speed of 20 to 30 miles per hour for the first 500 miles is recommended.

**STOPPING THE CAR**

Close throttle and apply hand brake, depressing clutch before bringing car to a complete stop shift "High" - "Low" lever to neutral position. Shut off ignition if car is to be removed from the track.

**REVERSING THE CAR**

Bring car to a complete stop. Depress clutch pedal and shift "Forward"-"Reverse" lever to the Reverse position and "High"-"Low" lever to Low position. Open throttle gradually and drive car in the reverse direction using "High" or "Low" as conditions indicate.

**LUBRICATION**

Engine crankcase capacity 7 pints. Maintain lever to "full" mark on oil indicator. Use a good quality detergent oil classified for service MS or MS/DG. Do not use service DS at any time. Use the proper SAE number of oil for expected temperature conditions. See engine manufacturer's bulletin for recommendations.

Transmission capacity 2-1/2 pints. Maintain lubricant to level plug on side of case. Use SAE 140 gear lubricant in summer, and SAE 90 in winter.

**BATTERY INSTALLATION AND CHARGING**

Caution: Observe proper polarity when installing battery, negative battery terminal must be grounded. Reverse polarity will destroy the rectifier diodes in alternator.

As a precautionary measure, disconnect positive battery terminal when charging battery in car. Connecting charger in reverse will destroy the rectifier diodes in alternator. Possible damage to regulator may occur if the battery is charged without disconnecting the positive battery terminal. Most commercial chargers contain a high AC ripple voltage which can be 4 or 5 volts in excess of the DC voltage indicated on charger. This voltage may exceed the maximum rating of rectifier diodes and regulator.

CAUTION: When any welding is done disconnect both battery terminals.

Once a month force some grease into fittings on main axle bearings, center bearing, brake shaft bearings, idler sprocket and differential axle.

## CHAIN

CAR NO. 231446 AND HIGHER—Motorcycle type roller chain. Keep chain tight with adjustable idler sprocket. Later cars also have adjustable dampener rails on the upper and lower strands to eliminate chain whip at higher speeds. This chain must be lubricated as explained below.

LUBRICATION—Fluid lubricant must be applied to the chain to assure an oil supply to minimize metal to metal contact. Lubrication, if supplied in sufficient volume, also provides effective cooling and impact damping at higher speeds. Therefore, it is IMPORTANT THAT THE CHAIN BE LUBRICATED EVERY 8 HOURS, preferably at the end of each days run, using a lubricant as recommended below.

Use a lubricant that contains molybdenum disulfide with rust and oxidation inhibitors in a light oil or vehicle that will evaporate. This type of lubricant leaves a residue on the working surfaces that will resist picking up and holding abrasive particles. Following are four such lubricants:

1. Molub-Ally Spindle Oil Light
2. Molyube Special Spindle Oil Light
3. Molyube No. 70
4. Whitmore's Open Chain Lubricant

If it is not practical to obtain the above products, an automotive or hydraulic oil of about SAE 10 viscosity should be used. Oils that leave a sticky or gummy residue should, of course, be avoided.

## GENERAL SUGGESTIONS-SAFETY FIRST

Inspect the car before starting out each day, and make sure it is in good operating condition. Once a week clean the entire car thoroughly, examining gasoline joints, electrical connections, bolts, screws, etc., and tighten all loose parts.

When making inspection, see that:

- (1) Wheel tires are not worn dangerously thin.
- (2) Wheels and axles run true.
- (3) Axle end nuts are secured by cotters.
- (4) Wheel hub bolts are tight.
- (5) All wheels are tight on axles.
- (6) All sprockets are aligned and chain runs true.
- (7) Brake is in first class working condition.

Load baggage and tools carefully to prevent their working into moving parts or falling off the car.

Drive slowly with car under full control where there is not a clear view ahead, over road crossings, through gangs of workmen, through railroad yards, and over frogs, and switches. Don't drive during rain or snowstorms or foggy weather unless necessary and then only with a lineup and extra precaution. When following other motor cars or trains, remain 500 feet or more behind. Adhere strictly to local railroad motor car rules.

## AXLES AND BEARINGS

The axles run on a double row taper roller bearing at each end and a steady bearing supports the drive axle next to the sprocket. When axle bearings require adjustment, it is best to remove them from the car. Unbolt and remove wheel, axle and bearing assemblies. Take off wheels, then jar the bearing assemblies off the axles. If but one bearing requires adjustment, block up end of car and take off brake shoe and wheel adjacent to the bearing, then unbolt and remove bearing.

Take bearings apart and clean with gasoline if the lubricant is dirty or old, then lubricate with light oil. To remove bearings from axle casing, take off the cover, and with a heavy punch, drive against the inner race from the opposite end of the casing. If necessary, remove remaining outer race by jarring the casing against a heavy wood block. Reassemble in reverse order. Sufficient shims should be used under the cover to obtain .003" to .005" bearing end play with cover bolted tight.

When replacing drive axle on car, be sure all three bearings are in line. If necessary shim under the low one. A slightly sprung axle can usually be straightened cold, but one badly bent should be replaced. Never heat axles.

Two thrust collars on each axle take up end play. To adjust a thrust collar, loosen set screw and clamp bolt, then tap collar snugly against axle bearing. When correctly set, tighten clamp bolt first, then set screw, and finally apply lock wire.

**DIFFERENTIAL AXLE** Cars are equipped with the FAIRMONT differential axle. It accommodates two tight insulated wheels which turn independently of each other with their respective halves of the axle.

**WHEELS** Standard Cars use four 16" x 5/16" demountable steel wheels, taper bore for insulation. Insulated wheels are mounted on the tapered axle ends with fibre sleeves in the hubs and fibre washers next to the outer face to provide electrical insulation. Each group is drawn tight by the axle end nut and a steel washer.

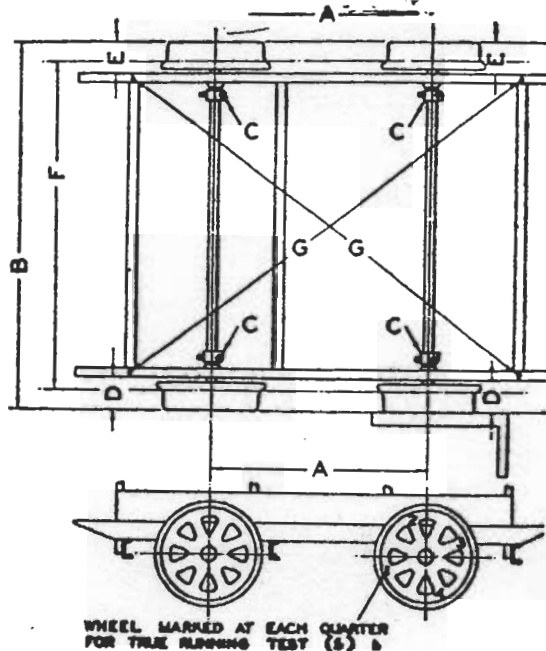
Each wheel tire is tightly held on the hub by eight heat treated bolts. Removing these bolts and swinging the brake shoe clear permits quickly exchanging a tire without taking the complete wheel off the axle. Insulated 16" demountable wheels are easily removed from axles by using M19509 demountable wheel puller, or a shock wheel puller.

Before applying insulation, smooth all burrs in the wheel hub and wipe clean. Then carefully drive the insulating sleeve in until flush with outer hub face; and tighten wheel on the axle with end nut and steel washer, being sure the fiber washer is next to outer hub face. If wheels come too close together (under gauge), tough paper can be wrapped around the axle taper; if too far apart (over gauge), slightly ream the bushing with a taper reamer. Be sure insulated wheels are tight on the taper and all wheels run true.

### WHEEL ALIGNMENT

NOTE--Sometimes a small difference in drive wheel circumferences causes a car to run to one side even though perfectly aligned. Again, another car will operate satisfactorily with drive wheels showing more variation. Track conditions, direction of wind, car loading and windshield have some effect on a car, and it may tend to run to one side even when in alignment.

Careful observance of these instructions insures a safe running car. This diagram represents the running gear of any motor car, but the instructions apply to cars with FAIRMONT 16" demountable wheels.



- (1) Replace bent or spring frame members and check frame for squareness. Measurements "G" across corners should be the same if frame is square. Tighten all frame bolts.
- (2) Carefully block up under the car frame so all wheels turn freely and frame is level.
- (3) Examine wheels and replace tires with badly worn flanges.

- (4) Drive wheel tires must be approximately the same size. Measure them with a steel tape around the tread, being careful to keep it equidistant from the flanges at all points.
- (5) (a) Rotate wheel and axle assembly, and hold a piece of chalk steady so it just touches outer face of each wheel. If wheel and axle run true, chalk will mark evenly around wheel--if wheel is sprung or axle is bent, chalk will mark the high spot on wheel. Wheels or axles badly out of true usually must be replaced, though axles can sometimes be straightened. A maximum tolerance of  $1/32$ " out of true is recommended on wheel tread, and up to  $1/16$ " out of true on wheel face or flange.
- (b) Another method of check is with a straight edge or two-foot carpenter's square across outer wheel faces (see diagram). Mark each wheel face in quarters and measure from the square to the side sill at each quarter turn of the wheel. The measurements should be the same for each wheel, if the wheel and axles run true.
- (6) Axle center distance "A" should be the same on both sides of car. Axle bearing bolts can be loosened to permit shifting the wheel and axle assemblies a trifle if necessary.
- (7) Cars have the wheels assembled on the axles with a tolerance of  $1/8$ " to  $1/4$ " under standard  $56\frac{1}{2}$  gauge. This enables them to operate on under gauge track or canted rail without change. The measurement over outside faces of wheels at "B" is  $62\text{-}3/4$ " when wheels are  $3/16$ " under standard  $56\frac{1}{2}$ " gauge. It is preferable to have both axle assemblies drawn to the same gauge when aligning wheels.
- (8) New insulating sleeves are sometimes necessary to bring wheels to gauge. Fit them carefully so wheels run true.
- (9) With frame approximately centered between the four wheels, the outside faces of left wheels should be in line and parallel with axle bearing sill. Check with a straight edge, tight cord or carpenter's square, being sure distances "E" are both the same. If necessary, loosen and shift thrust collars "C".
- (10) Next, check right side of car where distances "D" should also be equal and approximately the same as "E".
- (11) Carefully set all thrust collars "C" against bearings. First tighten clamp bolts, then set screws and lock wires.
- (12) After thrust collars are set, make another check of wheels to be sure alignment has not been disturbed.

**BRAKE**

To bring the car to a quick stop, apply the brake with firm, steady pressure, yet allowing the wheels to revolve. Go over the brake when weekly car inspection is made, and tighten bolts and adjust shoes if necessary. Be sure cotter pins are spaced.

To adjust brake, disconnect adjustable toggles on both sides of car, unscrew the eye bolt or yoke on each toggle 2 or 3 turns, then reconnect parts. Try the brake and, if necessary, make further adjustment until all four shoes take hold equally. Be sure the lever can be latched in the first notch in the guide. Install replacement liners when old ones wear thin. Be sure liners and bolts holding them do not touch other metal brake parts, as electric signals might be operated.

**CAR FRAME AND HOUSING**

Keep all frame bolts tight. In case frame members become damaged, straighten them; or if badly out of shape, replace. Unlatching and raising the seat top permits inspections and adjustments to be quickly and easily made.

**ENGINE MOUNTING**

The engine is held on the engine sills by four bolts with nuts and lock washers. They should be kept tight.

**CLUTCH LEVER CLEARANCE**

Adjust linkage so clutch has approximately  $1/2$  inch of free travel, before striking control panel, when clutch is engaged. Measure from back of lever to rear of lever opening.

## INSTRUCTIONS FOR ORDERING PARTS

When this bulletin is received, complete the following motor car record from the FAIRMONT name plates on the car and on the engine. Always mention these factory serial numbers when writing about the car or ordering parts.

Factory Car No. \_\_\_\_\_ Class \_\_\_\_\_ Series \_\_\_\_\_  
 \_\_\_\_\_ Group \_\_\_\_\_ Special \_\_\_\_\_  
 Factory Engine No. \_\_\_\_\_ H.P. \_\_\_\_\_ Type \_\_\_\_\_  
 \_\_\_\_\_ Group \_\_\_\_\_ Special \_\_\_\_\_

## TO INSURE PROMPT AND CORRECT SHIPMENT of parts, always give:

- (1) Quantity of each part wanted.
- (2) Symbol number of part as shown in this book.
- (3) Description of part as shown in this book.
- (4) Factory serial numbers recorded above.
- (5) Car gauge if other than 56½" standard.
- (6) State whether shipment is to be by mail, express, or freight.

All parts are shipped f.o.b. factory, transportation charges to be paid by customer. Terms are strictly cash with order.

Parts are listed by description, symbol and quantity, and all important items are illustrated. Quantities in right-hand columns shown the number of parts in each assembly or group. Items printed in capitals are assemblies which include all parts listed immediately following and indented to the right. When assemblies can be used, always order them to save work of fitting separate parts. If indoubt as to any part wanted, send full description or sketch, or send old part with order.

For descriptive purposes the engine end of car is named front, and right and left are determined by looking from rear to front.

Common bolts, nuts and washers are not listed in this bulletin, as they can be obtained from any railroad store department.

The numerical part list on page 7 contains all items shown in the parts section covering standard battery ignition cars. Spare parts for accessories, and parts used on special cars only, are not listed in this index.

Spare parts of accessory groups are given on pages 22 through 27. Items used only on cars having figures in the space on the name plate marked "Special" are listed according to car designation, starting on page 28.

## CAR IDENTIFICATION

(Found on Car Name Plate)

To accurately identify cars, all units carry the designation "Class MT14 - Series L - Group \_\_\_\_\_ - Special \_\_\_\_\_." The group number is always shown, and cars having changes to customers' specifications also have figures in the space marked "Special." When the letter "Z" appears in the designation it indicates either broad or narrow gauge.

## LIMITED WARRANTY

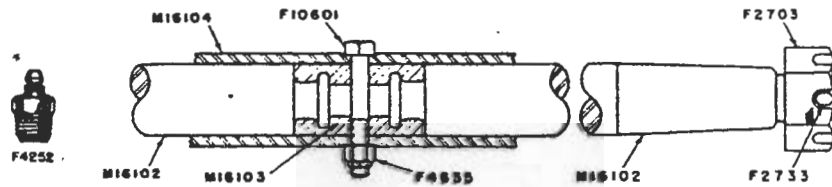
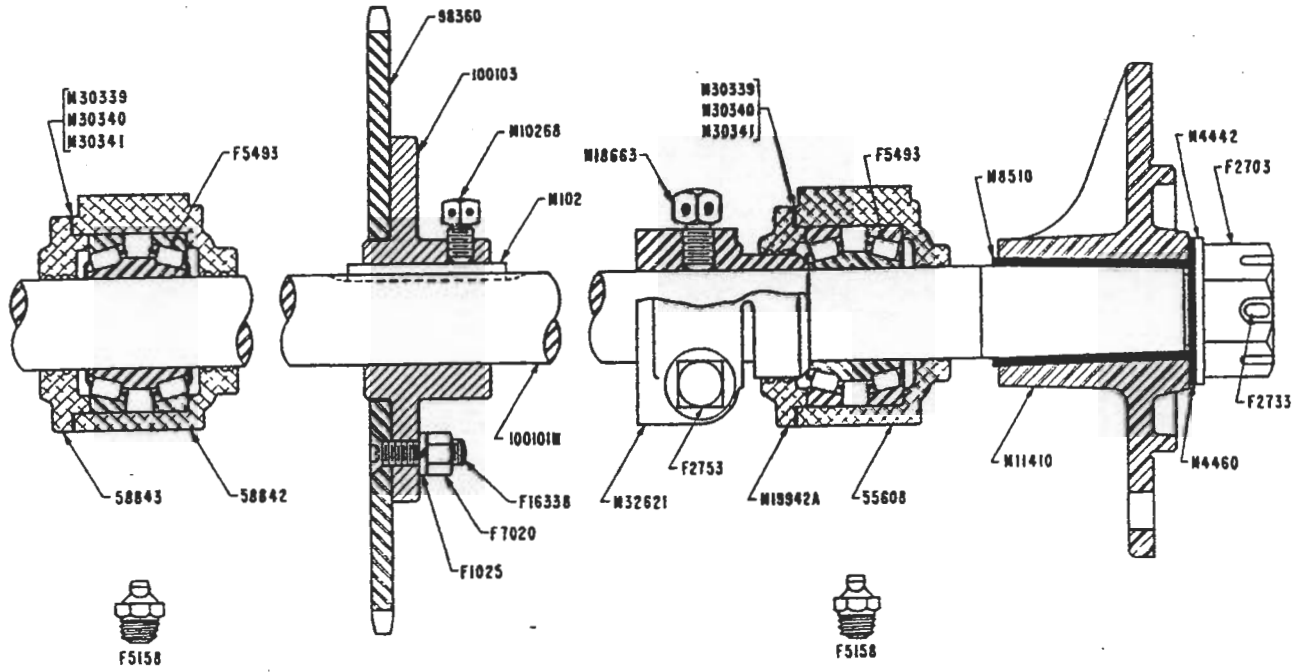
FAIRMONT products are designed to give the utmost service and are manufactured from high grade material, by competent workmen under careful supervision. FAIRMONT warrants products of its manufacture to be free of defects in material and workmanship, under normal use and service, for a period of 90 days from date of delivery to the original user. FAIRMONT'S obligation under this warranty is limited to repairing or replacing at its factory, or other location designated by us, any part or parts thereof which shall, within 30 days of the date when failure occurs or defect is noted, be returned with transportation charges prepaid, and which upon examination shall appear to FAIRMONT'S satisfaction to have been defective. Such free repair or replacement does not include transportation charges, or the cost of installing the new part or any other expenses incident thereto. FAIRMONT shall not be liable for other loss, damage, or expense directly or indirectly arising from the use of its products.

Ordinary wear and tear, abuse, misuse, neglect or alteration are not covered by this warranty. FAIRMONT assumes no liability for expenses or repairs made outside its factory except by written consent. Warranty is null and void if instructions and operating procedures specifically referring to warranty coverage are not followed.

Equipment or parts not manufactured by this company, but which are furnished in connection with FAIRMONT products, are covered directly by the warranty of the manufacturer supplying them. However, FAIRMONT will assist in obtaining adjustment on such equipment or parts when necessary.

This warranty is in lieu of all other warranties expressed or implied including any implied warranties of merchantability or fitness for a particular purpose and any liability for special or consequential damages.

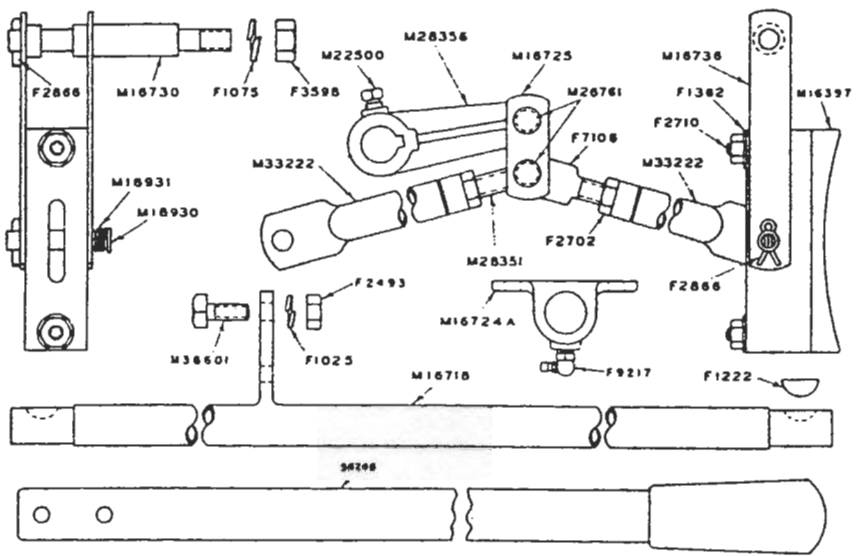
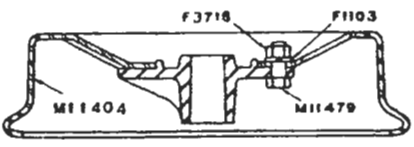






## AXLES - AXLE BEARINGS - THRUST COLLARS

DRIVE AXLE 1-7/16" (inc. nuts and cotters) . . . . .	.100101n	1
Axle End Nut . . . . .	F2703	2
Cotter Pin . . . . .	F2733	2
AXLE SPROCKET WITH HUB (car No. 231446 and higher) . . . . .	102901	1
Sprocket 50T (two piece - car No. 231446 and higher - III, 98360) . . . . .	102900	1
HUB WITH SET SCREW . . . . .	103989	1
Set Screw 3/8 x 3/4" . . . . .	M10268	1
Cap Screw 3/8 x 1-1/2" flat head . . . . .	F16338	1
Drive Key 1/4 x 1/4 x 2-1/2" . . . . .	M102	1
AXLE SPROCKET WITH HUB (cars below No. 231446) . . . . .	102901	1
Sprocket 48T (two piece - cars below No. 231446) . . . . .	102900	1
Hub with Set Screw . . . . .	103989	1
Cap Screw 3/8-16 x 1-1/2" flat head socket . . . . .	F16338	4
DIFFERENTIAL AXLE 1-7/16" (inc. nuts and cotters) . . . . .	M35798	1
Axle Half . . . . .	M16102	2
Split Bushing (halves not sold) . . . . .	M16103	1
Sleeve (axle) . . . . .	M16104	1
Grease Fitting . . . . .	M4252	1
Cap Screw 5/16 x 2" (center connection) . . . . .	F10601	1
Hex Elastic Stop Nut 5/16" . . . . .	F4635	1
Axle End Nut . . . . .	F2703	2
Cotter Pin . . . . .	F2733	2
AXLE BEARING 1-7/16" (assembled) . . . . .	55607	4
Casing (axle bearing) . . . . .	55608	4
Bearing with Races . . . . .	F5493	4
Cover (bearing casing) . . . . .	M19942A	4
Cover Shim (.010 steel) . . . . .	M30339	4
Cover Shim (.007 steel) . . . . .	M30340	8
Cover Shim (.005 steel) . . . . .	M30341	12
Cap Screw 3/8 x 1" hex head (cover) . . . . .	F1007	12
Grease Fitting . . . . .	F5158	8
CENTER BEARING 1-7/16" (assembled) . . . . .	65544	1
Casing (center bearing) . . . . .	58842	1
Bearing with Races . . . . .	F5493	1
Cover (bearing casing) . . . . .	58843	1
Cover Shim (.010 steel) . . . . .	M30339	1
Cover Shim (.007 steel) . . . . .	M30340	3
Cover Shim (.005 steel) . . . . .	M30341	4
Cap Screw 3/8 x 1" hex head (cover) . . . . .	F1007	3
Grease Fitting . . . . .	F5158	2
THRUST COLLAR 1-7/16" (complete) . . . . .	M32621	4
Clamp Bolt (thrust collar) . . . . .	F2753	4
Hex Half Nut 1/2" . . . . .	F2737	4
Set Screw (drilled head) . . . . .	M18663	4
Lock Wire (per foot) . . . . .	F3054	26"

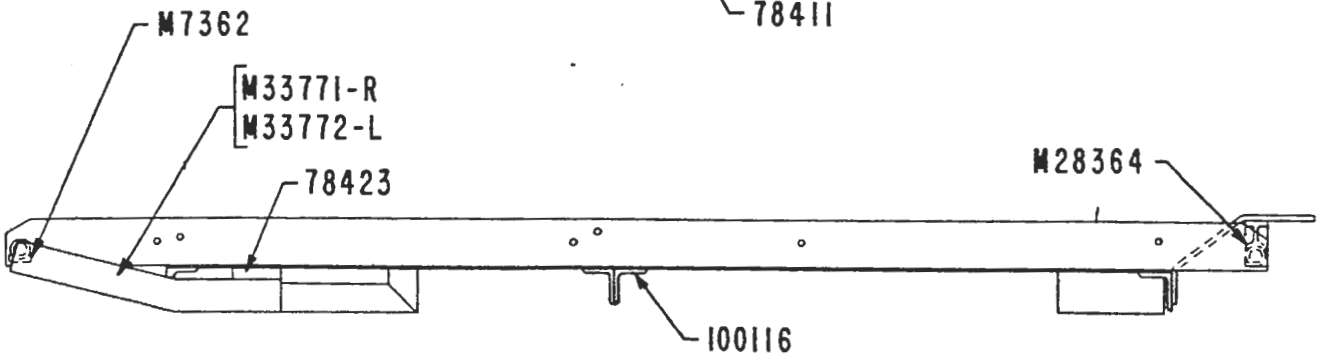
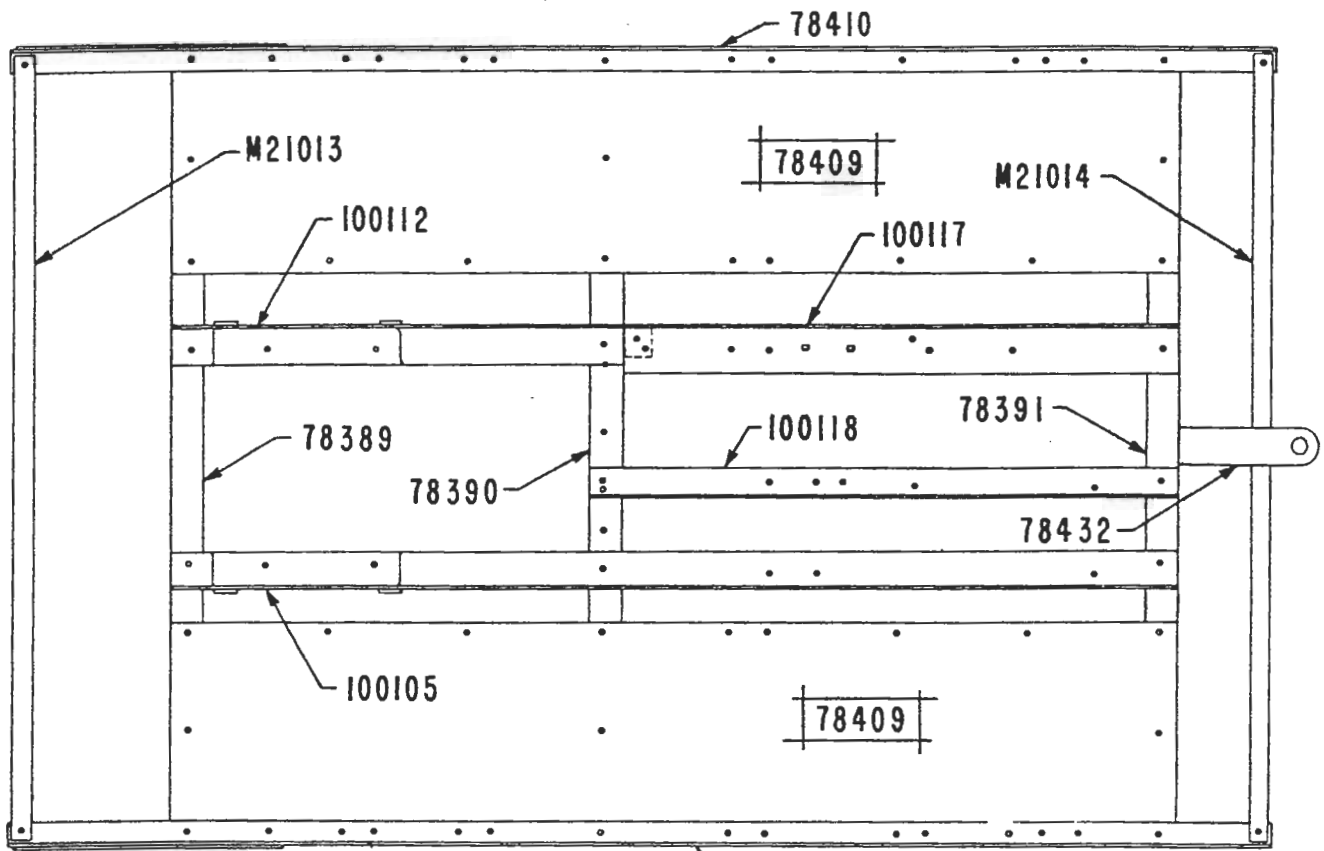


## WHEELS - INSULATION

16 x 5/16 x 4-1/2" DEMOUNTABLE WHEEL (taper bored for Ins.) . . . . .	M9688D	4
Hub only (taper bored) . . . . .	M11410	4
16 x 5/16 x 4-1/2" Demountable Tire only . . . . .	M11404	4
BOLT SET (8 each hub bolt, nut and lock washer) . . . . .	M12177	4
Tire Bolt (alloy steel) SAE . . . . .	M11479	32
Lock Washer 5/8" . . . . .	F1103	32
Hex Nut 5/8" SAE . . . . .	F3718	32
INSULATION SET 1-7/16" (complete) . . . . .	M8509	4
Insulating Sleeve . . . . .	M8510	4
Insulating Washer . . . . .	M4460	4
Steel Washer . . . . .	M4442	4

## BRAKE

Brake Shaft . . . . .	M16718	1
BEARING WITH GREASE FITTING (brake shaft) . . . . .	M16724	4
Grease Fitting . . . . .	F9217	4
Brake Lever (with grip) . . . . .	56246	1
Bolt 3/8 x 1-1/4" (brake lever to shaft) . . . . .	M36601	2
Hex Castle Nut 3/8" . . . . .	F2493	2
End Arm (brake shaft) . . . . .	M28356	2
Key (end arm) . . . . .	F1222	2
Set Screw 3/8 x 5/8" (end arm) . . . . .	M22500	2
Lock Wire (specify length required) . . . . .	F3054	
Toggle Link . . . . .	M16725	4
Pin (toggle link) . . . . .	M28761	4
BRAKE SHOE WITH LINER . . . . .	M17193	4
Liner . . . . .	M16397	4
Brake Shoe Block . . . . .	M16735	4
Hex Nut 5/16" self locking . . . . .	F7120	8
Pivot Stud (3/4" threaded end) . . . . .	M16730	4
Cotter Pin 3/16" x 1" . . . . .	F2866	12
TOGGLE ARM (with eye bolt) . . . . .	M29230	2
Body only (toggle arm) . . . . .	M33222	2
Eye Bolt (toggle arm) . . . . .	M28351	2
Jam Nut 1/2"-12 Thd. . . . .	F2702	2
TOGGLE ARM (with yoke) . . . . .	M29229	2
Body only (toggle arm) . . . . .	M33222	2
Yoke (toggle arm) . . . . .	F7106	2
Jam Nut 1/2"-12 Thd. . . . .	F2702	2
Hanger (brake shoe) . . . . .	M16736	8
Pin (brake shoe hanger) . . . . .	M18930	4
Spring (hanger pin) . . . . .	M18931	4

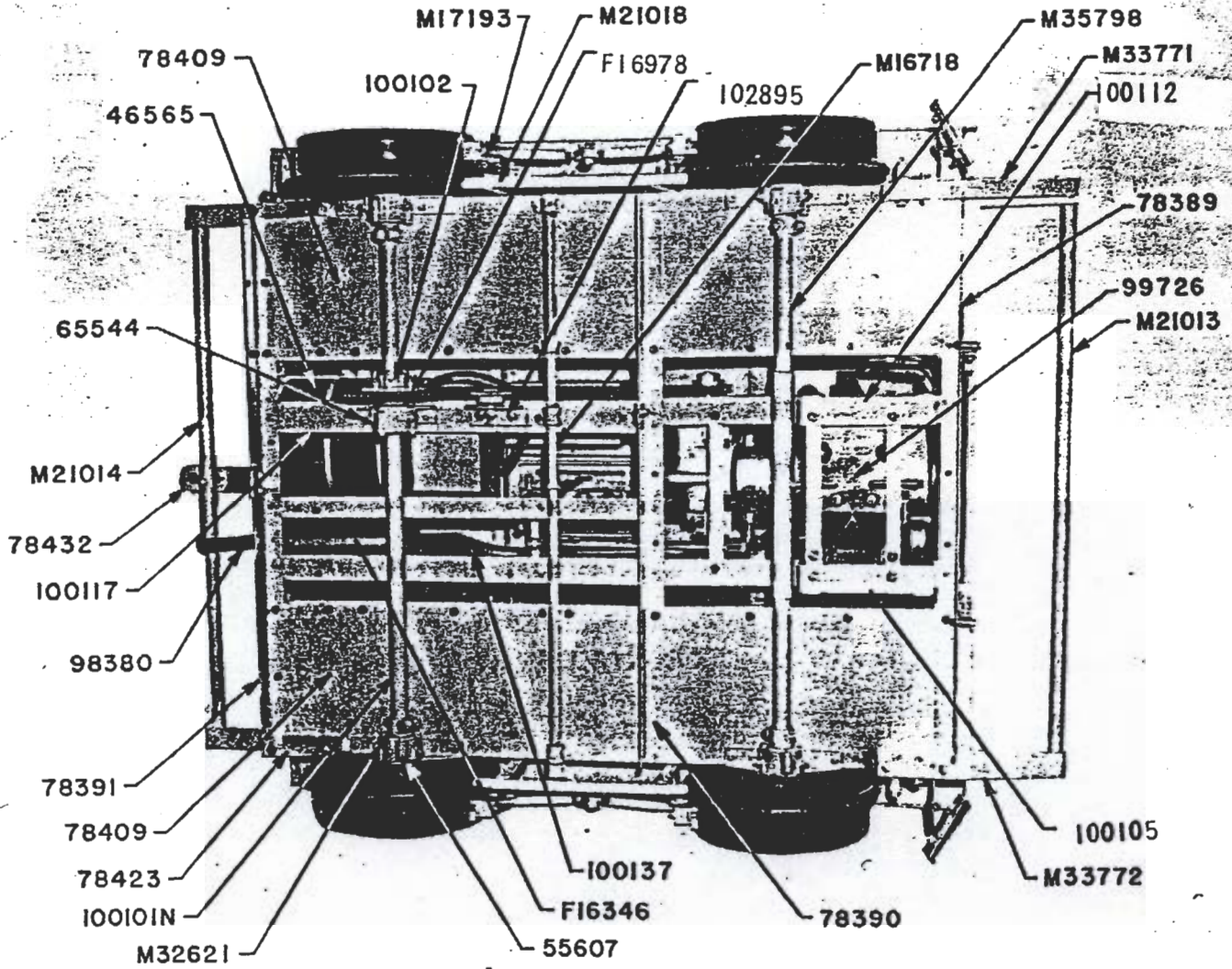


## FRAME AND DECK

FRAME AND DECK (assembled) . . . . .	100104	1
Cross Angle (front) . . . . .	78389	1
Cross Angle (center) . . . . .	78390	1
Cross Angle (rear) . . . . .	78391	1
Side Sill (right) . . . . .	78410	1
Side Sill (left) . . . . .	78411	1
Deck . . . . .	78409	2
Engine Sill (right) . . . . .	100112	1
Engine Sill (left) . . . . .	100105	1
Support Angle (idler) . . . . .	100117	1
Angle Clip (idler support angle to center cross angle) . . . . .	100116	1
Support Angle (clutch lever bearing) . . . . .	100118	1
Set-off Block . . . . .	78423	4
Set-off Skid (right) . . . . .	M33771	1
Set-off Skid (left) . . . . .	M33772	1
Lift Pipe (front) . . . . .	M21013	1
Lift Pipe (rear) . . . . .	M21014	1
Saddle (lift pipe) . . . . .	M7362	4
Drawbar . . . . .	78432	1
Saddle (drawbar) . . . . .	M26834	1
Rear Skid (with brace) . . . . .	M21018	2

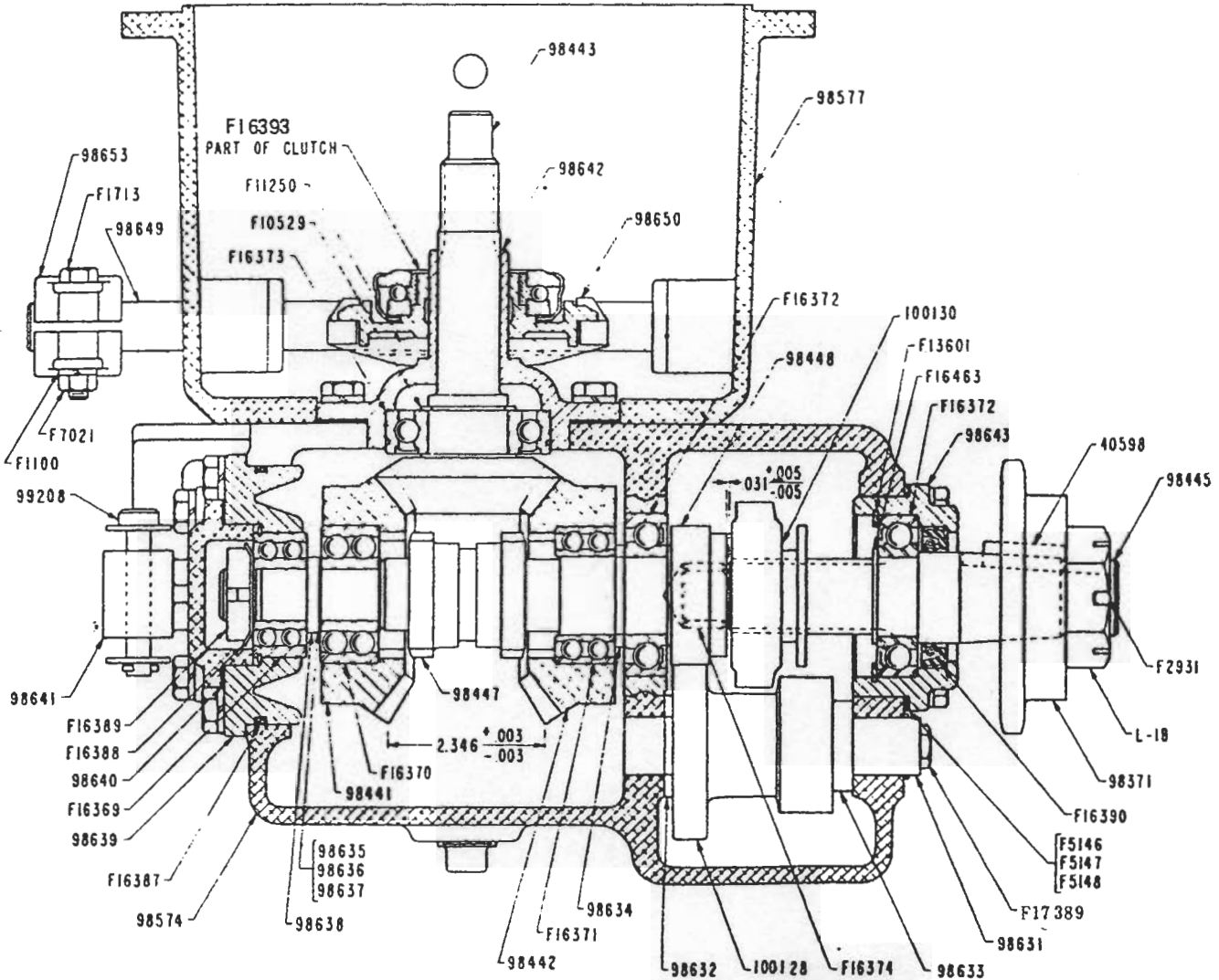
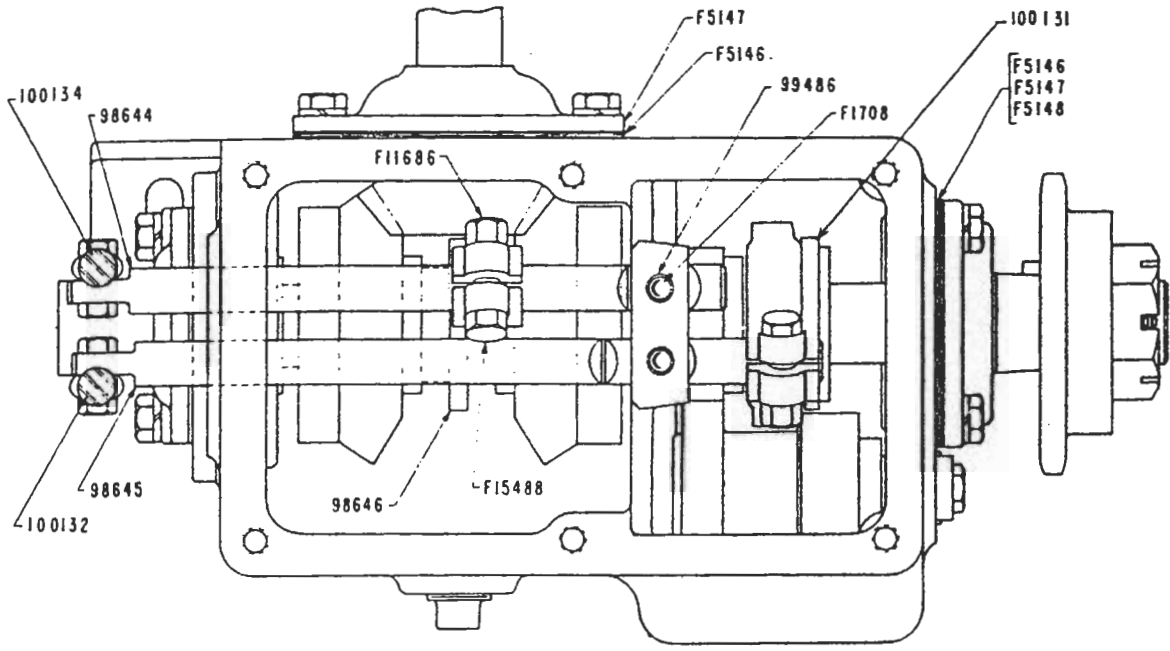
## CONTROLS

Throttle Lever . . . . .	98405	1
Spring (throttle lever) . . . . .	TF-68F	1
THROTTLE ROD WITH BALL JOINTS . . . . .	103827	1
Ball Joint (throttle lever end) . . . . .	F9552	1
Ball Joint (engine end) . . . . .	F17068	1
Hex Nut 1/4"-28 . . . . .	F2632	3
Hex Nut No.10-32 . . . . .	F10825	1
Support Hanger (throttle rod) . . . . .	98408	1
Grommet . . . . .	F8708	1
Choke Control . . . . .	F3558	1
Support Clip (choke control) . . . . .	F16349	1
Support Clip (throttle rod) . . . . .	100157	1
Clutch Lever . . . . .	100119	1
Support Bearing (clutch lever) . . . . .	M31270	2
Grease Fitting . . . . .	F8014	2
Clutch Rod . . . . .	100122	1
Yoke . . . . .	F3114	1
Hex Half Nut 5/16"-24 . . . . .	F8905	2
Yoke Pin 5/16 x 31/32" (clutch rod) . . . . .	F6619	1



## ENGINE

ENGINE WITH TRANSMISSION AND CLUTCH . . . . .	116710	1
ENGINE (with extended crankcase drain) (less clutch) . . . . .	116709	1
Nipple 1/2 x 2" . . . . .	F2219	1
Coupling 1/2" . . . . .	F3003	1
Rivnut . . . . .	F10387	4
Snap Terminal . . . . .	F10201	1
St. Elbow 90 degree - 1/8" . . . . .	F6584	1
Cable 36" (starter to battery) . . . . .	F5378	1
Battery Terminal . . . . .	F3999	1
Wire 56" (starter solenoid to starter switch) . . . . .	116644	1
Cable 13" (starter switch to ignition switch) . . . . .	100174	1
Wire 18" (battery terminal to ammeter) . . . . .	41456	1
Wire 38" (ignition switch to regulator) . . . . .	66426	1
Wire 37-3/4" (alternator output to ammeter) . . . . .	100179	1
Spring . . . . .	98552	1
CLUTCH . . . . .	F16340	1
Driven Plate Assembly . . . . .	F16341	1
Pressure Plate Assembly . . . . .	F16342	1
Release Sleeve with Bearing . . . . .	F16393	1
Cap Screw 5/16-24 x 3/4" hex head . . . . .	F10991	6
Pilot Bearing (clutch pilot - Fafner 203KD - ND7503) . . . . .	F16579	1
Bail (shift lever) . . . . .	F14260	2
Guard (engine front) . . . . .	99046	1
Spacer 1/2 x 2" (engine guard) . . . . .	93556	4
Support Bar (transmission) . . . . .	100135	2
Support Channel (transmission) . . . . .	100136	1
IDLER SPROCKET AND SUPPORT (car no. 231446 and higher) . . . . .	102895	1
Support Angle . . . . .	98377	1
Shaft (idler - car no. 231446 and higher) . . . . .	102898	1
Race (sprocket bearing - car no. 231446 and higher) . . . . .	102897	1
Needle Bearing (sprocket - car no. 231446 and higher) . . . . .	F16976	1
Sprocket 19T (idler - car no. 231446 and higher) . . . . .	102896	1
Grease Fitting 90 degrees 1/4"-28 . . . . .	F10722	1
Chain (roller - car no. 231446 and higher) . . . . .	F16978	1
Offset Link (roller chain - car no. 231446 and higher) . . . . .	F2220	1
CHAIN DAMPENER . . . . .	103977	1
Support Plate (chain dampener rail) . . . . .	103821	1
Support Angle (chain dampener rail) . . . . .	103822	2
Spacer . . . . .	50917	4
Dampener Rail (chain) . . . . .	103823	2
IDLER SPROCKET AND SUPPORT (cars below no. 231446) . . . . .	102895	1
Support Angle . . . . .	98377	1
Shaft (idler - cars below no. 231446) . . . . .	98378	1
Sprocket 17T (idler 0 cars below no. 231446) . . . . .	F16344	1
Grease Fitting 90 degrees 1/4"-28 . . . . .	F10722	1
Chain 5/8 pitch - 130 pitches (self lubricating 0 cars below 231446) (inc. link F11429) . . . . .	F16978	1
Connecting Link (only) . . . . .	F11429	1
Exhaust Pipe . . . . .	100137	1
Muffler . . . . .	F16346	1
Tail Pipe . . . . .	98380	1
Clamp (muffler) . . . . .	F16459	3
U-Bolt . . . . .	98381	1
Gauge (oil pressure) . . . . .	F16348	1
Connector (oil pressure gauge) . . . . .	F16457	1
Clamp 7/16" (oil pressure hose) . . . . .	F12845	1

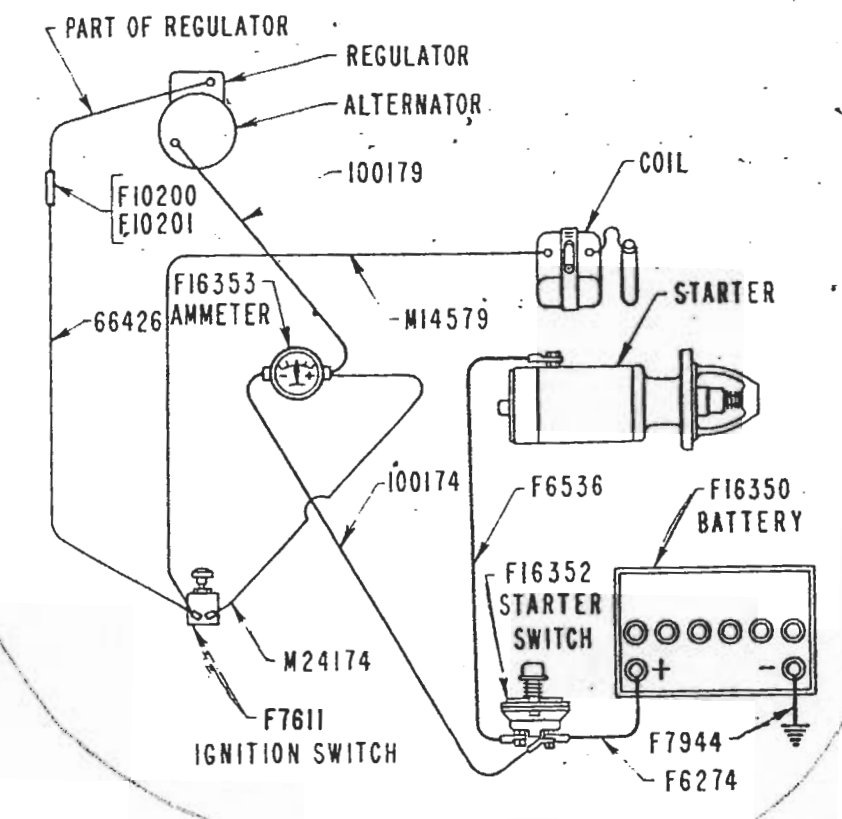




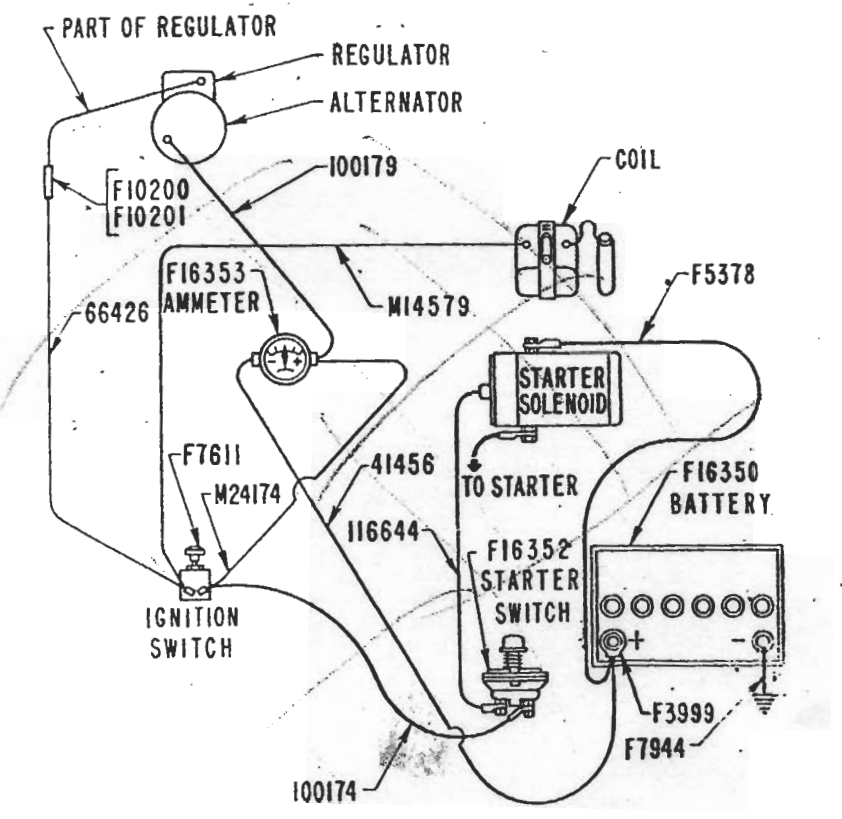
## TRANSMISSION

TRANSMISSION (less clutch housing) . . . . .	113077	1
TRANSMISSION WITH CLUTCH HOUSING . . . . .	100125	1
Case (transmission) . . . . .	98574	1
SHAFT WITH "O" RING . . . . .	98631	1
"O" Ring . . . . .	F11323	1
Thrust Washer (countershaft) . . . . .	98632	1
SPUR GEAR WITH BEARING 21T and 15T . . . . .	100128	1
Bearing (oilite) . . . . .	F16581	2
Thrust Sleeve (spur gear) . . . . .	98633	1
Pinion . . . . .	98448	1
Needle Bearing (pinion) . . . . .	F16374	1
Ball Bearing (out put shaft - inner) . . . . .	F16372	1
Spacer . . . . .	98634	1
Ball Bearing (double row) . . . . .	F16371	1
Bevel Gear (right) . . . . .	98442	1
Gear (clutch) . . . . .	98447	1
Shim .010" . . . . .	98635	1
Shim .003" . . . . .	98636	2
Shim .002" . . . . .	98637	2
Bevel Gear (left) . . . . .	98441	1
Ball Bearing (double row) . . . . .	F16370	1
Shim .010" . . . . .	98635	2
Shim .003" . . . . .	98636	2
Shim .002" . . . . .	98637	1
Spacer . . . . .	98638	1
Carrier (bearing) . . . . .	98639	1
"O" Ring 3-5/8 x 3-7/8 x 1/8"-70 . . . . .	F16387	1
Ball Bearing (double row - with snap ring) . . . . .	F16369	1
Lock Washer . . . . .	F16388	1
Lock Nut . . . . .	F16389	1
Gasket (bearing cover) . . . . .	98640	1
Cover (bearing) . . . . .	98641	1
Pinion (bevel) . . . . .	98443	1
Ball Bearing (pinion) . . . . .	F16373	1
Retaining Ring (pinion bearing) . . . . .	F10529	1
Carrier (pinion) . . . . .	98642	1
Set Screw No. 10-24 x 1/4" . . . . .	F13407	2
Shim .005" . . . . .	F5146	2
Shim .007" . . . . .	F5147	1
Out Put Shaft . . . . .	98445	1
Ball Bearing (out put shaft) . . . . .	F16372	1
Rating Ring (out put shaft bearing) . . . . .	F16463	1
Carrier (out put shaft) . . . . .	F16390	1
Oil Seal (out put shaft) . . . . .	F16390	1
Retaining Ring (out put shaft bearing) . . . . .	F13601	1
Spur Gear 21T & 15T (shifter) . . . . .	100130	1
Shim .005" . . . . .	F5146	1
Shim .007" . . . . .	F5147	1
Shim .020" . . . . .	F5148	1
Shifter Rail (front) . . . . .	98644	1
Shifter Rail (rear) . . . . .	98645	1
Shifter Fork (forward and reverse) . . . . .	98646	1
Shifter Fork (low and high) . . . . .	100131	1
Bolt 5/16-24 x 1-1/2" hex head . . . . .	F15488	2
Hex Nut 5/16"-24 Huglock . . . . .	F11686	2
Steel Ball 3/8" . . . . .	F1708	2
Spring . . . . .	99486	2
Gasket . . . . .	98647	1
Cover . . . . .	98648	1
Breather Vent . . . . .	F16391	1
CLUTCH HOUSING WITH OILITE BEARINGS . . . . .	98577	1
Bearing (oilite) . . . . .	F10332	2
Shaft (clutch release) . . . . .	98649	1
Yoke (clutch release) . . . . .	98650	1
Woodruff Key 1/8 x 3/4" . . . . .	F11250	2
Set Screw 1/4 x 3/4" square head . . . . .	F1192	1
Hex Half Nut 1/4" . . . . .	F2368	1
Clip (spring) . . . . .	98651	1
Clutch Lever 3" . . . . .	98653	1
Woodruff Key 1/8 x 3/4" . . . . .	F11250	1
Cover . . . . .	98654	1
Plug 1/2" MPT . . . . .	F13126	1
Key 3/8 x 1-1/4" . . . . .	40598	1
Sprocket 19T . . . . .	98371	1
Hex Slotted Nut 1-1/8" . . . . .	L-1B	1
Shift Lever (rear - High - Low) . . . . .	100132	1
Shift Lever (front - Forward-Reverse) . . . . .	100134	1
Pin (shift levers) . . . . .	99208	1

MT14-L-1



MT14-L-2



## BATTERY IGNITION EQUIPMENT

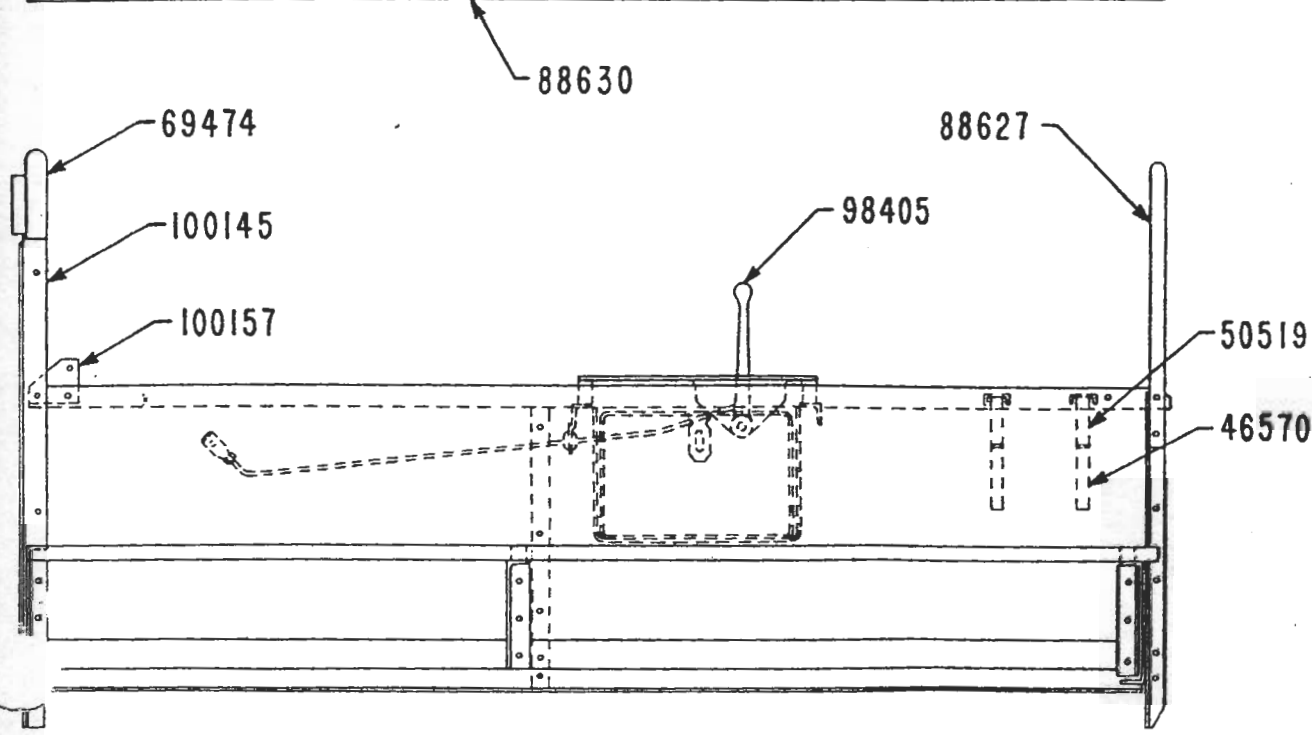
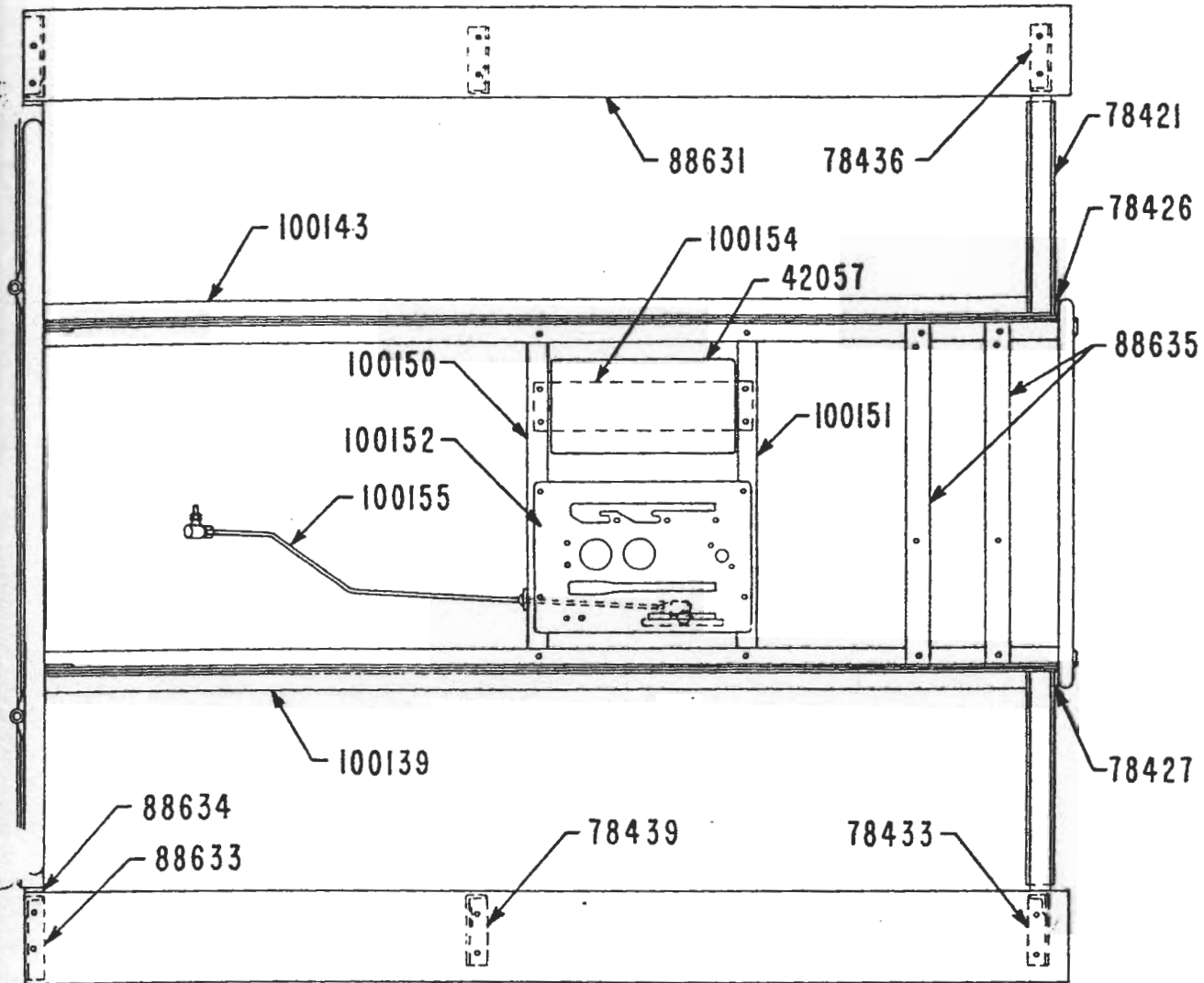
Battery	125408	1
Rubber Base (battery)	100171	2
Clamp Bar (battery hold down)	100173	2
Stud	100123	2
Hex Elastic Stop Nut 5/16"	F14476	2
Cable 16-1/2" (battery negative to ground)	F7944	1
Cable 14-1/2" (battery positive to starter switch)	F6274	1
Starter Switch	F16352	1
Cable 39" (starter switch to starter) - MT14-L-1	F6536	1
Cable 46" (starter solenoid to battery negative) - MT14-L-2	F5378	1
Wire 56" (starter solenoid to starter switch) - MT14-L-2	116644	1
Wire 18" (battery terminal to ammeter) - MT14-L-2	41456	1
Ammeter	F16353	1
Washer (brass) MT14-L-2	F11314	2
Insulating Dish (fibre - ammeter)	37264	1
Ignition Switch	F7611	1
Wire (Starter switch to ammeter)	100174	1
Wire 6" (ammeter to ignition switch)	M24174	1
Wire 51-1/2" (ignition switch to coil)	M14579	1
Wire (ignition switch to regulator)	66426	1
Snap Terminal	F10201	2
Connector (two - wire)	F10200	1
Wire (alternator to ammeter)	100179	1
Support Cleat (wire)	C-48	6
Camp 7/16" (starter cable)	F12845	1
Alternator (part of smalt case engine)	F17791	1

## TOOL BOX - TOOLS

Tool Box	42057	1
Support (tool box mounting)	100154	1
Grease Gun	F4125	1
Oil Can (9 spout)	F3652	1
TOOL KIT (in bag)	M36398	1
Draw String Bag	M6738	1
Ball Peen Hammer	F2945	1
Pliers - 6"	F2946	1
Screw Driver - 1"	F2948	1
Socket Wrench 1/2 Sq. Dr. - 12 Pt.	F18383	1
End Wrench 7/16 x 3/8" (openings)	F7957	1
End Wrench 9/16 x 1/2" (openings)	F7956	1
End Wrench 3/4 x 5/8" (openings)	F7955	1
End Wrench 7/8 x 13/16" (openings)	F7954	1
End Wrench 15/16" & 1" (openings)	F7953	1

## FUEL SYSTEM

FUEL TANK (with cap)	46565	1
Threaded Bushing (solders in tank)	PH-90F	2
Bayonet Catch (neck for F3613)	F3614	1
FILLER CAP (bayonet type - with gasket)	F3613	1
Gasket (filler cap)	F3651	1
Pipe Plug	F2035	1
Saddle (fuel tank)	50519	2
Strap (fuel tank)	46570	2
FUEL STRAINER WITH NIPPLE	M34410	1
Nipple 1/8 x 3/4" brass	F1688	1
Bowl (glass - strainer)	F7876	1
Screen (strainer)	F8692	1
Gasket (strainer bowl)	F7877	1
Flexible Fuel Line 51"	98149	1
Half Union (fuel line)	F7179	1
Elbow 90 degrees 1/8 MPT x 7/16"-20 (MT14-L-1 Only)	F10189	1
Clamp (hose)	F12845	2



HOUSING - LIFT HANDLES

HOUSING (less seat tops and lift handles) . . . . .	100138	1
Safety Rail (front) . . . . .	69474	1
Safety Rail (rear) . . . . .	88627	1
Side Panel (right) . . . . .	100143	1
Side Panel (left) . . . . .	100139	1
Support Frame (front) . . . . .	100145	1
Support Angle (right rear) . . . . .	78426	1
Support Angle (left rear) . . . . .	78427	1
Wear Strip (lift handle guide) . . . . .	100147	4
Guide (lift handle - front and rear) . . . . .	100148	4
Guide (lift handle - center) . . . . .	100149	2
CONTROL PANEL WITH WEAR PLATE . . . . .	100152	1
Wear Plate . . . . .	70233	1
Cap Screw 5/16 x 3/4" flat head . . . . .	F3543	3
Support Angle (control panel - front) . . . . .	100150	1
Support Angle (control panel - rear) . . . . .	100151	1
Tool Tray End (rear) . . . . .	78421	2
Deck End And Foot Board Support (right rear) . . . . .	78436	1
Deck End And Foot Board Support (left rear) . . . . .	78433	1
Foot Board Support (center) . . . . .	78439	2
Foot Board Support (front) . . . . .	88633	2
Spacer Strip . . . . .	88634	2
Step Plate (right) . . . . .	88631	1
Step Plate (left) . . . . .	88630	1
Spacer Block . . . . .	88632	4
Support Channel (fuel tank) . . . . .	88635	2
Saddle (fuel tank) . . . . .	50519	2
Strap (fuel tank) . . . . .	46570	2
Tool Box . . . . .	42057	1
Support (tool box mounting) . . . . .	100154	1
Gusset (front seat hinge) . . . . .	100157	2
Spacer Washer . . . . .	F9681	2
Spacer Washer 13/32" x 1 x 3/16" . . . . .	M27675	2
Spacer Sleeve . . . . .	88637	2
HOUSING SEAT (front) . . . . .	100158	1
Support Frame (seat board) . . . . .	100160	1
Cover Cleat . . . . .	100165	1
Catch (housing seat) . . . . .	100166	1
Bushing . . . . .	48862	1
Cap Screw 1/4 x 1" flat head . . . . .	F3069	1
HOUSING SEAT (rear) . . . . .	100167	1
Support Angle (right) . . . . .	100169	1
Support Angle (left) . . . . .	100170	1
Cover Cleat . . . . .	78471	2
Catch (housing seat) . . . . .	100166	1
Bushing . . . . .	48862	1
Rubber Pad . . . . .	99440	1
Cap Screw 1/4 x 1" flat head . . . . .	F3069	4
Bushing . . . . .	78478	4
Extension Lift Handle (aluminum - one piece) . . . . .	98929	2

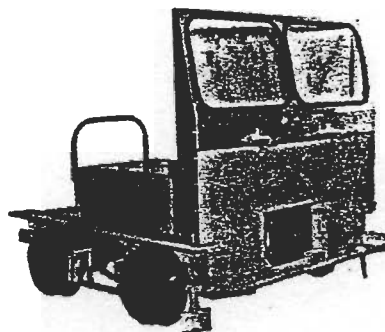
### ACCESSORIES

The following standard accessories may be applied to MT14 series L cars. When ordering for field installation, be sure to give factory car and engine serial numbers. Also shown are some tools that will simplify maintenance work.

#### ALUMINUM WINDSHIELD 89373

Easily applied in the field. All bolts, nuts and lock washers are CADMIUM plated to resist rusting.

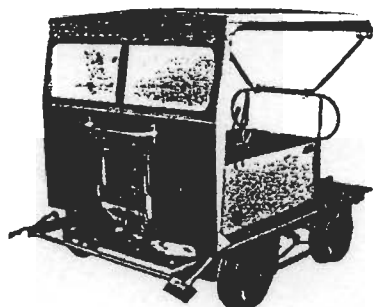
Seal 23-15/16" . . . . .	89382
Extension Panels. . . . .	89379
Frame with Windows . . . . .	76941
Frame only . . . . .	76942
Window 18-7/16 x 27-13/16" . . . . .	75951
Rubber Moulding . . . . .	75952
Seal . . . . .	69845
Side Gusset (right) . . . . .	89384
Side Gusset (left) . . . . .	89385
Side Gusset Angle. . . . .	79372
Seal . . . . .	77883
Guard Rail . . . . .	58612



Groove Pin 1/4 x 1-3/4" . . . . .	F9905
Brkt. (guard rail - outside) . . . . .	58613
Brkt. (guard rail - inside) . . . . .	69636

#### MOTOR CAR TOP 76190

Combination of 76190 top and 89373 aluminum windshield gives durable all weather protection to motor car operator and passengers. Aluminum top is bolted to top of windshield and a rear support which clamps on rear safety rail. Long gussets replace adjustable bars on windshield side frame.



Roof Unit . . . . .	76950
Support Pipe. . . . .	76948
Saddle . . . . .	64709
U-Bolt . . . . .	64708
Lock washer 5/16" . . . . .	F9546
Hex Nut 5/16" . . . . .	F9547
Rubber Insulator (windshield to roof) . . . . .	F11486
Hex Nut 5/16" . . . . .	F11487
Cap Nut 5/16" . . . . .	F13206

#### REAR CURTAIN 93533

Rear Curtain. . . . .	93591
Bolting Strip. . . . .	76011
Bracket (support post-upper) . . . . .	79354
Bracket (support post-lower) . . . . .	93583
Support Post (right rear) . . . . .	93587
Support Post (left rear). . . . .	93588
Spring . . . . .	M1245
Stud (lift dot fastener) . . . . .	F13207
Eyelet (lift dot fastener) . . . . .	F7746
Clinch Plate (lift dot fastener) . . . . .	F7747
Side Curtains (pair) . . . . .	93589
Rear Curtain. . . . .	93591

#### SIDE CURTAINS (Pr.) 93532

Bracket (slide rod) . . . . .	74247
Slide Rod (side curtain) . . . . .	81928
Bracket (support post-upper) . . . . .	79354
Bracket (support post-lower) . . . . .	93583
Support Post (right rear) . . . . .	93587
Support Post (left rear). . . . .	93588
Spring . . . . .	M1245
Lock Bolt . . . . .	69057
Curtain Ring. . . . .	43901
Web Strap 18" . . . . .	F3394
SIDE CURTAIN . . . . .	93589
Curtain Bar R.F. & L.R. . . . .	76005
Curtain Bar L.F. & R.F. . . . .	76007
Handle . . . . .	F9998

#### SIDE & REAR CURTAINS 93534

Combination of groups 93532 & 93533 with one set of corner

**RAIL SWEEPS 42548 BLADE TYPE**

Heavy duty type, hinged. All parts are steel except blade proper. Adjustable for rail clearance. Gives full protection due to blade width. Long lived. Blade easily renewed.

Body - right . . . . .	42549
Body - left . . . . .	42552
Blade only . . . . .	M23956
Clamping Plate . . . . .	M23957
Hinge Bolt . . . . .	42555
Spring . . . . .	QB-61C
Spring Seat. . . . .	M30435A
Slotted Nut . . . . .	F2545
Retainer Strap . . . . .	56507
Spacer . . . . .	M17302



**SAFETY COUPLER M11668**

Provides maximum safety and efficiency in linking trailer to motor car. Hook 7/8" rod with self closing malleable iron catch.



**SPRING COUPLER M27169**

Bolts to drawbar on motor car. Springs cushion bumps and jerks when towing trailers.



**HAND GONG - 6 INCH 62965**

Meets minimum requirements. Safe mounting.

Gong only - 6" . . . . .	F3444
Pull Wire . . . . .	37725
Guide - pull wire . . . . .	69695

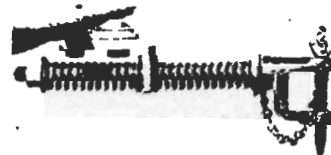
**HEADLIGHT & 2 RED TAILLIGHTS 100049**

Mounting Angle (taillights) . . . . .	98338
Mounting Bracket (headlight) . . . . .	41000
Mounting Bracket (headlight) . . . . .	41001
Clamp Bracket. . . . .	66404
U-Bolt . . . . .	M16715
Headlight - 12 V. . . . .	F13445
Taillight - 12 V. . . . .	F13552
Switch (light) . . . . .	F7611



**LINK COUPLER M6656**

One piece, holds securely, easily detached lifting one end a few inches



**HAND GONG - 10 INCH 51681**

Loud, durable warning signal. Mounted away from tools. Operated by pull wire.

Gong only - 10" . . . . .	1337
Pull Wire . . . . .	37725
Guide (pull wire) . . . . .	69695

**FOOT GONG - 10 INCH M29432**

Loud warning signal operated by foot leaves both hands free. Mounted out of way of tools, etc.

Gong only - 10" . . . . .	F3025
Mounting Board. . . . .	M25202

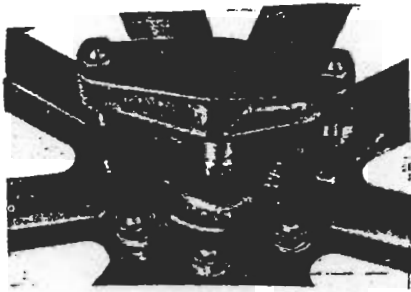
**DOUBLE ELECTRIC WIPER 78377**

Windshield Wiper (12" blade) . . . . .	F13551
Blade only - 12" . . . . .	F12933
Arm (inside mounted wiper). . . . .	F13200
Wire 16 Ga. (spec. length req.) . . . . .	F2958
Snap Terminal (small) . . . . .	F10201
Connector (two wire). . . . .	F10200
Terminal . . . . .	F4320
Loom (spec. length req.) . . . . .	1446



**POCKET WHEEL GAUGE M21138**

This gauge provides a dependable method of checking motor car and trailer wheel gauges. Locate line of one wheel, hold tape or other accurate measure in position, then shift gauge to other wheel.



**WHEEL PULLER M19509**

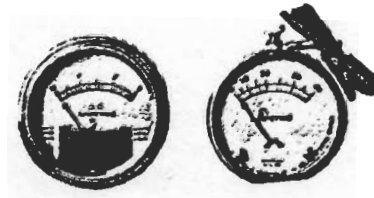
Very effective, yet light weight and easy to use, this puller makes it a simple matter to remove demountable wheels or hubs with complete safety. Consists of a cross bar and two long bolts with nuts and washers. Draw nuts evenly, and when tight, a hammer blow on center of cross bar frees the wheel.

**AMMETER F7838**

Low reading ammeter is desirable when checking ignition systems to determine coil draw. Scale reads from 0 to 3 amps.

**AMMETER 1230**

Used to check condition of dry cell batteries. Good ignition means easy starting.



**CANVAS COVER M7951**

Cars that are kept out of doors need this protection. Brown No. 10 duck, 7 x 9 feet, treated with "Preservo" for fire proofing. Eyelets for tying.



## HEATER 122773

Heater (Gasoline) Hunter No. GH 21-6 . . . . .	F19785	1
Bracket, Front . . . . .	122766	1
Bracket, Rear . . . . .	122767	1
Mount (rubber) . . . . .	F19822	4
Nipple 1/8" MPT . . . . .	F10908	1
Elbow 90 degrees . . . . .	F15084	1
Hose Assembly - 19 1/2" . . . . .	88029	1
Adapter . . . . .	F12509	1
Clip Hose . . . . .	F8460	2
Hose . . . . .	F19941	1
Coupling . . . . .	F4304	1
Nipple 1 x 4 1/2" . . . . .	F6234	1
Elbow 90 degrees . . . . .	F6233	1
Nipple 1 x 3" . . . . .	F6318	1
Elbow 90 degrees . . . . .	F6233	11
Exhaust Pipe . . . . .	122772	1
Clamp, hose . . . . .	F10607	2

## HEATER 121137

Heater (Gasoline) Hunter No. UH 47-6 . . . . .	F19463	1
Bracket, front . . . . .	121400	1
Bracket, rear . . . . .	121405	1
Brace . . . . .	121411	1
Elbow, Compression Union . . . . .	F19465	1
Grommet . . . . .	F10509	1
Coupling 1 1/4 FPT x 1 FPT . . . . .	F13071	1
Exhaust Pipe . . . . .	121550	1
Tubing Copper 3/16"-13" . . . . .	F17444	

## (Common Parts to Both Heaters)

Elbow Compression Union . . . . .	F7699	1
Tubing, Copper 3/16" (93") . . . . .	F17444	
Grommet . . . . .	F10509	1
Clip, Hose . . . . .	F10724	4
Elbow 90 degrees . . . . .	F7690	1
Fuel Pump (electric) . . . . .	F19466	1
Angle . . . . .	121412	1
Elbow 90 degrees . . . . .	F10677	1
Hose Assembly . . . . .	70414	1
Adapter . . . . .	F7179	1
Tee . . . . .	F10180	1
Clamp, Hose . . . . .	F12147	2
Grommet . . . . .	F17311	1
Hanger, Pipe . . . . .	F19467	1
Cable (Low tension) (ground to bracket) . . . . .	98415	1
Cable (Low tension) (heater to batt) . . . . .	121511	1
Clip Hose . . . . .	F10724	7
Cable (low tension) (heater to fuel pump) . . . . .	121552	1
Grommet . . . . .	F8309	1
Ty-Rap . . . . .	F18229	4
Tape, Asbestor (72") . . . . .	F9139	

PARTS USED ON SPECIAL CARS ONLY

Listed on this and following pages in numerical order according to car designation, are spare parts used only on MT14 Series L cars with figures in the space on the name plate marked "Special".

The symbols at left side of page are for standard car parts as listed on pages 9 through 21, and symbols for corresponding parts as used on the special cars are shown at the right hand side of page. When selecting material for special cars, first locate items in standard parts section pages 9 through 21, and note symbol number. Then under the part of this section covering the car for which parts are being ordered, determine whether or not the symbol is changed for such cars. Items for which there are no corresponding parts in the standard parts section are shown as additional items under the car designation to which they apply.

MT14-L-1-1

PAGE 13 under FRAME AND DECK

78389	Cross Angle (front) . . . . .	.Should read . . . . .	102388
78390	Cross Angle (center) . . . . .	.Should read . . . . .	102389
78410	Side Sill (right) . . . . .	.Should read . . . . .	102390
78411	Side Sill (left) . . . . .	.Should read . . . . .	102391
M21018	Rail Skid (with brace) . . . . .	.omit	
Add:	1 Rail Skid (with brace - right) . . . . .		102392
	1 Rail Skid (with brace - left) . . . . .		102398

PAGE 13 under TOOL BOX - TOOLS

Add:	1 Tool Box . . . . .		74805
	2 Support Strap 1/8 x 1 x 4-1/8" . . . . .		89216

PAGE 21 under HOUSING - LIFT HANDLES

100145	Support Frame (front) . . . . .		102400
Add:	1 Tool Tray Extension (left) . . . . .		102406
	1 Tool Tray . . . . .		102408
	2 Support Angle . . . . .		102409
	2 Tool Tray Extension (outside) . . . . .		102410
	2 Tool Tray Extension (inside) . . . . .		102411
	1 Support (front safety rail) . . . . .		89549
	1 Center Safety Rail . . . . .		89550
	1 U-Bolt 3/8 x 4-5/8" . . . . .		M31966
	1 U-Bolt 3/8 x 6-3/4" . . . . .		83469

MT14-L-1-2

PAGE 13 under FRAME AND DECK

78410	Side Sill (right) . . . . .	.Should read . . . . .	104151
78411	Side Sill (left) . . . . .	.Should read . . . . .	104152
M21013	Lift Pipe (front) . . . . .	.Should read . . . . .	M21014
78432	Drawbar . . . . .	.Should read . . . . .	104153
88627	Rear Safety Rail . . . . .		104155
78421	Tool Tray End . . . . .		104159
Add:	1 Drawbar (front) . . . . .		104154
	2 Coupler (drawbar) . . . . .		44681
	2 Pin (drawbar) . . . . .		M30756

MT14-L-1-3

PAGE 11 under BRAKE

56246	Brake Lever . . . . .	.Should read . . . . .	M36788
-------	-----------------------	------------------------	--------

PAGE 13 under FRAME AND DECK

	Cross Angle (front) . . . . .	.Should read . . . . .	102388
--	-------------------------------	------------------------	--------

78410	Side Skid (right) . . . . .	.Should read . . . . .	104151
78411	Side Skid (left) . . . . .	.Should read . . . . .	104152
78390	Cross Angle (center) . . . . .	.Should read . . . . .	102389
M33771	Set-Off Skid (right) . . . . .	.Omit	
M33772	Set-Off Skid (left) . . . . .	.Omit	
M21018	Rail Skid . . . . .	.Should read right . . . . .	102392
Add:	1 Rail Skid (left) . . . . .		102398

PAGE 21 under HOUSING - LIFT HANDLES

88627	Safety Rail (rear) . . . . .	.Should read . . . . .	104155
Add:	1 Support (center rail - front) . . . . .		89540
	1 Center Rail . . . . .		89550
	1 U-Bolt . . . . .		M31966
	1 U-Bolt (for car with top) . . . . .		83469

MT-14-L-2

The following are the principle changes from MT14-L-1 and MT14-L-2.

1. The Onan engine changes from a model CCKB-1455H to model CCKB-2746J.

MT-14-L-2-1

PAGE 11 under BRAKE

56246	Brake Lever (with grip) . . . . .	.Should read . . . . .	M36788
-------	-----------------------------------	------------------------	--------

PAGE 13 under FRAME AND DECK

78389	Cross Angle (front) . . . . .	.Should read . . . . .	102388
78390	Cross Angle (center) . . . . .	.Should read . . . . .	102389
78410	Side Skid (right) . . . . .	.Should read . . . . .	104151
78411	Side Skid (left) . . . . .	.Should read . . . . .	104152
78423	Set-Off Block . . . . .	.Omit - 2	
M33771	Set-Off Skid (right) . . . . .	.Omit	
M33772	Set-Off Skid (left) . . . . .	.Omit	
M21018	Rail Skid . . . . .	.Should read right . . . . .	102392
Add:	1 Rail Skid (left) . . . . .		102398

PAGE 21 under HOUSING - LIFT HANDLES

88627	Safety Rail (rear) . . . . .	.Should read . . . . .	104156
Add:	1 Support (center rail - front) . . . . .		89549
	1 Center Rail . . . . .		89550
	1 U-Bolt . . . . .		M31966
	1 U-Bolt (for car with top) . . . . .		83469

MT14-L-2-2

PAGE 13 under FRAME AND DECK

78389	Cross Angle (front) . . . . .	.Should read . . . . .	102388
78390	Cross Angle (center) . . . . .	.Should read . . . . .	102389
78410	Side Skid (right) . . . . .	.Should read . . . . .	102390
78411	Side Skid (left) . . . . .	.Should read . . . . .	102391
78423	Set-Off Block . . . . .	.Omit - 2	
M33771	Set-Off Skid (right) . . . . .	.Omit	
M33772	Set-Off Skid (left) . . . . .	.Omit	
M21018	Rail Skid (with brace) . . . . .	.Omit	
Add:	1 Rail Skid (with brace - right) . . . . .		102392
	1 Rail Skid (with brace - left) . . . . .		102398

(Continued on next page)

PAGE 19 under TOOL BOX - TOOLS

Add: 1 Tool Box . . . . . 74805

PAGE 21 under HOUSING - LIFT HANDLES

100145 Support Frame (front) . . . . . 102400
Add: 1 Tool Tray Extension (left) . . . . . 102406
1 Tool Tray Extension (right) . . . . . 102408
2 Support Angle . . . . . 102409
2 Tool Tray Extension (outside) . . . . . 102410
2 Tool Tray Extension (inside) . . . . . 102411
1 Support (front safety rail) . . . . . 89549
1 Center Safety Rail . . . . . 89550
1 U-Bolt 3/8 x 4-5/8" . . . . . M31966
1 U-Bolt 3/8 x 6-3/4" . . . . . 83469

MT14-L-2-3

PAGE 19 under TOOL BOX - TOOLS

M36398 TOOL KIT (in bag) . . . . .omit all parts

PAGE 21 under HOUSING - LIFT HANDLES

100145 Support Frame (front) . . . . .omit
78421 Tool Tray End (rear) . . . . .omit
69474 Safety Rail (front) . . . . .omit
88634 Spacer Strip . . . . .omit
M27675 Spacer Washer . . . . .omit
88637 Spacer Sleeve . . . . .omit

MT14-L-2-4

PAGE 21 under HOUSING - LIFT HANDLES

88627 Safety Rail (rear) . . . . .should read . . . . . 104155
100158 Housing Seat (front) . . . . .should read . . . . . 121334
100167 Housing Seat (rear) . . . . .should read . . . . . 121336
Add: 1 Support - safety rail front . . . . . 89549
1 Safety Rail - center . . . . . 89550

MT14-L-2-5

PAGE 19 under BATTERY IGNITION EQUIPMENT

F16350 Battery . . . . .omit
100171 Rubber Base (battery) . . . . .omit
100173 Clamp Bar (battery hold down) . . . . .omit
100123 Stud . . . . .omit
F14476 Hex Elastic Stop Nut 5/16" . . . . .omit

PAGE 19 under TOOL BOX - TOOLS

M36398 TOOL KIT (in bag) . . . . .omit all parts

(continued on next page)

PAGE 21 under HOUSING - LIFT HANDLES

100145	Support Frame (front) . . . . .	.omit	
78421	Tool Tray End (rear) . . . . .	.omit	
69474	Safety Rail (front) . . . . .	.omit	
88634	Spacer Strip . . . . .	.omit	
M27675	Spacer Washer . . . . .	.omit	
88637	Spacer Sleeve . . . . .	.omit	

MT14-6-2-6

PAGE 9 under AXLES - AXLE BEARINGS - THRUST COLLARS

102901	AXLE SPROCKET WITH HUB . . . . .	Should read . . . . .	121887
100100	DRIVE AXLE (Complete) . . . . .	Should read . . . . .	121886

PAGE 15 under ENGINE

102895	IDLER SPROCKET AND SUPPORT . . . . .	Should read . . . . .	121885
F16978	Chain (roller) . . . . .	Should read . . . . .	F19626
F2220	Offset Link (roller chain) . . . . .	Should read . . . . .	F19625
103823	Dampener Rail (chain) . . . . .	Should read . . . . .	F19596

PAGE 17 under TRANSMISSION

100125	TRANSMISSION WITH CLUTCH HOUSING . . . . .	Should read . . . . .	121884
--------	--	-----------------------	--------

PAGE 19 under BATTERY IGNITION EQUIPMENT

F16350	Battery . . . . .	.Omit	
100171	Rubber Base (Battery) . . . . .	.Omit	
100173	Clamp Bar (battery hold down) . . . . .	.Omit	
100123	Stud . . . . .	.Omit	
F14476	Hex Elastic Stop Nut 5/16" . . . . .	.Omit	

PAGE 19 under TOOL BOX - TOOLS

M36398	TOOL KIT (in bag) . . . . .	.Omit all parts	
--------	-----------------------------	-----------------	--

PAGE 21 under HOUSING - LIFT HANDLES

100145	Support Frame (front) . . . . .	.Omit	
78421	Tool Tray End (rear) . . . . .	.Omit	
69474	Safety Rail (front) . . . . .	.Omit	
88634	Spacer Strip . . . . .	.Omit	
M27675	Spacer Washer . . . . .	.Omit	
88637	Spacer Sleeve . . . . .	.Omit	
100151	Support Angle (control panel - rear) . . . . .	Should read . . . . .	112291
110167	HOUSING SEAT (rear) . . . . .	Should read . . . . .	112292
Add:	1 Chain Oiler . . . . .		112288

MT-14-L-2-7

PAGE 13 under FRAME AND DECK

78389	Cross Angle (front) . . . . .	should read . . . . .	103288
78390	Cross Angle (center) . . . . .	should read . . . . .	102389
78410	Side Sill (right) . . . . .	should read . . . . .	104151
78411	Side Sill (left) . . . . .	should read . . . . .	104152
78423	Set-Off Block . . . . .	.omit - 2	
M33771	Set-Off Skid (right) . . . . .	.omit	
M33772	Set-Off Skid (left) . . . . .	.omit	
M21018	Rail Skid . . . . .	should read right . . . . .	102392
Add:	1 Rail Skid (left) . . . . .		102398